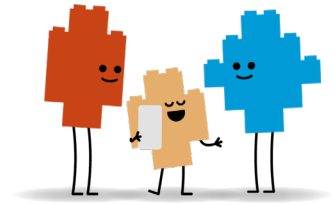


Showcase Day (~90 min+)



We would highly encourage every class that takes part in the Build the Change Educator program to carve out time after the core course to celebrate and showcase the children's awesome ideas. As one of the key aims of Build the Change is to amplify children's voices, the session has maximum impact especially when guests are invited from the local community, in person or online, who are in some way involved with making decisions at any scale that impact people and planet.

[Link to Session Presentation PDF](#)

http://www.LEGO.com/cdn/cs/sustainability/assets/blt4e917a5ff3d6a023/Session4_Showcase_Day.pdf

[Link to Printable Speaker's Notes for the presentation](#)

http://www.LEGO.com/cdn/cs/sustainability/assets/blt380158cf35847293/Session4_Showcase_Day_notes.pdf

SECTION	CONTENT	MATERIALS	TIMING (~75 min+)
Opening	Introduce the children to what is happening for the session and that you have a very special guest here to hear about their ideas (if you've invited one).	Showcase Day PDF presentation	5 min
Guest introduction	Give time to the guest(s) to introduce themselves and take questions from the children.		15 min
Showcase Time	Time for the children to showcase their ideas in whichever format best suits your class. It might be a presentation per group. It might be an expo/exhibition style walk around with the guest.		45 min+
Sum up and next steps	Recap on what you have covered and achieved over the course. Massive high fives!!!!		5 min

LOCAL GUEST FOR SHOWCASE DAY



Feel free to use our [letter/email template](#) to send to local decision makers, inviting them to Showcase Day to hear the students' ideas.

Examples of the kinds of people and groups you might reach out to include:

- Local town officials or community leaders
- Local mayor
- Environmental groups
- Sustainability-focused businesses
- School directors/principals/heads
- Heads of relevant topics at the school
- Environmental scientists, engineers, designers, and other experts